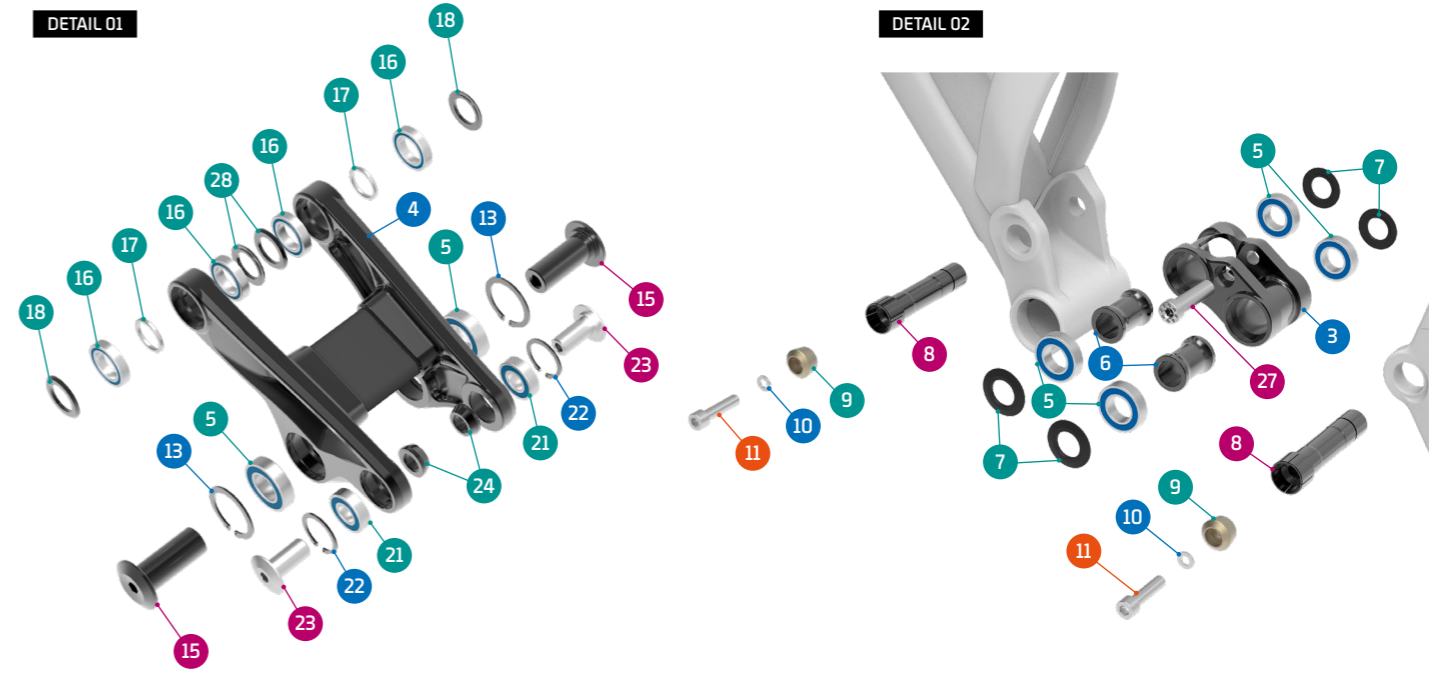


- Grease
- Threadlocker
- Grease + Threadlocker

Apply grease to the shaft, and locker to the threads

| ITEM No. | DESCRIPTION | QTY. | PART NUMBER | TORQUE |
|----------|-------------------|------|-------------|--------|
| 1 | FRONT TRIANGLE | 1 | | |
| 2 | REAR TRIANGLE | 1 | | |
| 3 | LOWER LINK | 1 | 099.18028 | |
| 4 | UPPER LINK | 1 | | |
| 5 | BEARING, 28x15x7 | 6 | SET 1 | |
| 6 | SPACER, 15x22x31 | 2 | SET 4 | |
| 7 | SPACER, 15x27x2 | 4 | SET 4 | |
| 8 | MAIN AXLE, 15x73L | 2 | SET 4 | 12Nm |
| 9 | TAPER NUT | 2 | SET 4 | |
| 10 | SPACER | 2 | SET 4 | |
| 11 | SCREW BOLT M6x25 | 2 | SET 4 | 10Nm |
| 12 | SPACER, 15x22x3 | 2 | SET 3 | |
| 13 | C-RING | 2 | SET 3 | |
| 14 | M8 THREAD AXLE | 1 | SET 3 | |
| 15 | LINK AXLE | 2 | SET 3 | 11Nm |
| 16 | BEARING, 24X15X5 | 4 | SET 1 | |

| ITEM No. | DESCRIPTION | QTY. | PART NUMBER | TORQUE |
|----------|------------------------------|------|-------------|--------|
| 17 | SPACER, 15x19x2t | 2 | SET 3 | |
| 18 | SPACER, 15x27x2 | 4 | SET 3 | |
| 19 | PIVOT AXLE, 26MM | 2 | SET 3 | 12Nm |
| 20 | PIVOT AXLE, M12 | 2 | SET 3 | |
| 21 | BEARING, 10x22x6 | 2 | SET 1 | |
| 22 | C-RING | 2 | SET 3 | |
| 23 | SHOCK BOLT | 2 | SET 2 | 8Nm |
| 24 | SPACER, 10x17x6 | 2 | SET 2 | |
| 25 | HANGER | 1 | SET 5 | |
| 26 | HANGER NUT | 1 | 099.16011 | |
| 27 | SLEEVE BOLT | 1 | SET 2 | 16Nm |
| 28 | CABLE ADAPTOR | 1 | | |
| 29 | CABLE GUIDE | 3 | SET 6 | |
| 30 | SCREW BOLT M3x10 | 3 | SET 6 | 3Nm |
| 31 | REAR AXLE, 12X148 P1.75 L180 | 1 | 112.90022 | |
| 32 | CHAINSTAY PROTECTOR | 1 | 099.21001 | |



| PART NUMBER | DESCRIPTION | COMPONENTS |
|-------------|---|---|
| 099.18100 | SET 1: ZERO BEARING KIT 14 | BEARING 6902V-2RS, 28x15x7 (x6) / BEARING 6900V-2RS, 10x22x6 (x2) / BEARING 6802V-2RS, 24X15X5 (x4) |
| 099.18102 | SET 2: SHOCK HARDWARE ZERO 10 | SPACER, 10x17x6 (x2) / SHOCK BOLT (x2) / SLEEVE BOLT (x1) |
| 099.18103 | SET 3: UPPER LINK KIT 20 | SPACER, 15x22x3 (x2) / LINK AXLE (x2) / M8 THREAD AXLE (x1) / C-RING (x2) / C-RING (x2) / SPACER, 15x19x2t (x2) / SPACER, 15x27x2 (x4) / PIVOT AXLE, 26MM (x2) / PIVOT AXLE, M12 (x2) |
| 099.18104 | SET 4: LOWER LINK KIT 20 | SPACER, 15x22x31 (x2) / SPACER, 15x27x2 (x4) / MAIN AXLE, 15x73L (x2) / SPACER (x2) / TAPER NUT (x2) / SCREW BOLT (x2) |
| 099.00055 | SET 5: HANGER M068 + NUT | HANGER M068 (x1) / HANGER NUT (x1) |
| 099.19010 | SET 6: CABLE GUIDE KIT 3 | CABLE GUIDE (x1) / SCREW BOLT (x1) |
| 099.19101 | GEO KIT FOXY 29 - HEADSET CUPS +/- 1° SIZE S | TOP CUP 1° SIZE S (x1) / LOW CUP 1° (x1) / TOP CUP 0° (x1) / LOW CUP 0° (x1) / HEADSET ONOFF TITAN TAPPED (x1) |
| 099.19102 | GEO KIT FOXY 29 - HEADSET CUPS +/- 1° SIZE M | TOP CUP 1° SIZE M (x1) / LOW CUP 1° (x1) / TOP CUP 0° (x1) / LOW CUP 0° (x1) / HEADSET ONOFF TITAN TAPPED (x1) |
| 099.19103 | GEO KIT FOXY 29 - HEADSET CUPS +/- 1° SIZE L | TOP CUP 1° SIZE L (x1) / LOW CUP 1° (x1) / TOP CUP 0° (x1) / LOW CUP 0° (x1) / HEADSET ONOFF TITAN TAPPED (x1) |
| 099.19105 | GEO KIT FOXY 29 - HEADSET CUPS +/- 1° SIZE XL | TOP CUP 1° SIZE XL (x1) / LOW CUP 1° (x1) / TOP CUP 0° (x1) / LOW CUP 0° (x1) / HEADSET ONOFF TITAN TAPPED (x1) |